

1000

SPECIFICATION
SHEET



A CHOICE OF COLOURS



BLACK



CLASSIC
CREAM



STAINLESS
STEEL*

A CHOICE OF TRIM



CHROME TRIM



BRASS TRIM

* Only available with chrome trim

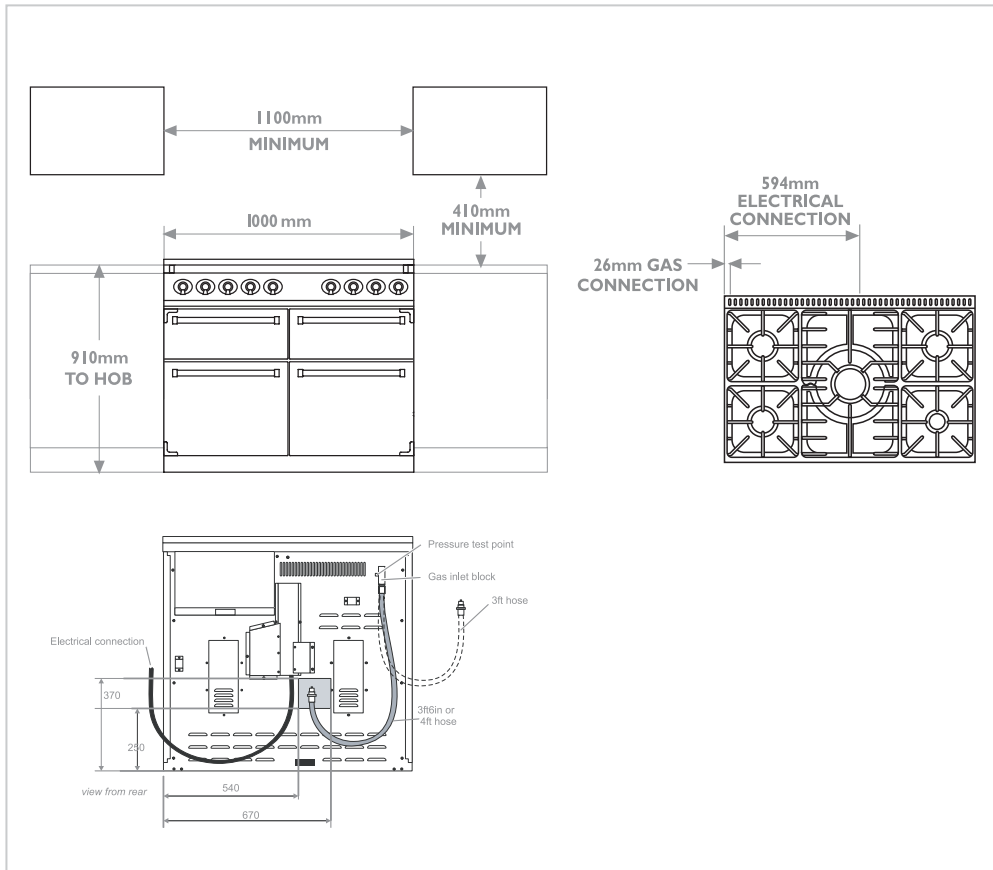
1000

The Falcon 1000 combines the build quality and performance you would expect from any Falcon appliance with the design flair that the modern home enthusiast desires. The 1000 is the first Falcon range cooker to offer an advanced ceramic grill.

- Large five burner stainless steel hob with three spillage wells
- Impressive 5kw central burner
- Single handed ignition for easier hob use
- Flame safety device shuts off gas to hob if the flame is accidentally extinguished
- 2 Fan Oven for even cooking
- Available in dual fuel natural gas
- Free three year parts and labour guarantee

1000

SPECIFICATION SHEET



1000

1000 Dual Fuel

Dimensions in mm	W x D x H 1000 x 600 x 915 - 942
Hob	3 x 3kW 1 x 1.7kW 1 x 5kW
Hob central burner	1 x 5kW
Grill rating	1 x 2.5kW (electric)
Oven rating	(LH) 1 x 2.5kW (electric)
Oven rating	(RH) 1 x 2.5kW (electric)
Browning Element	1 x 1.2kW (electric)
Total Rating	15.7kW (gas) 8.7kW (electric)
Weight	157 kg (345.4 lbs)
Oven capacity	1 x 49 litres / 1 x 49 litres
Internal Oven Dimensions	380 x 429 x 409 mm
Power supply	230V (50Hz) 30 amp Single phase
Gas Connection	1/2" BSP
Energy Ratings	
Fan Oven	C

Accessories included – Wok ring and front plinth